

## Obstructive Sleep Apnea-hypopnea Syndrome

DMDI has now advanced its position in the market by introducing a service taking advantage of the unique features of the Dolphin Imaging.

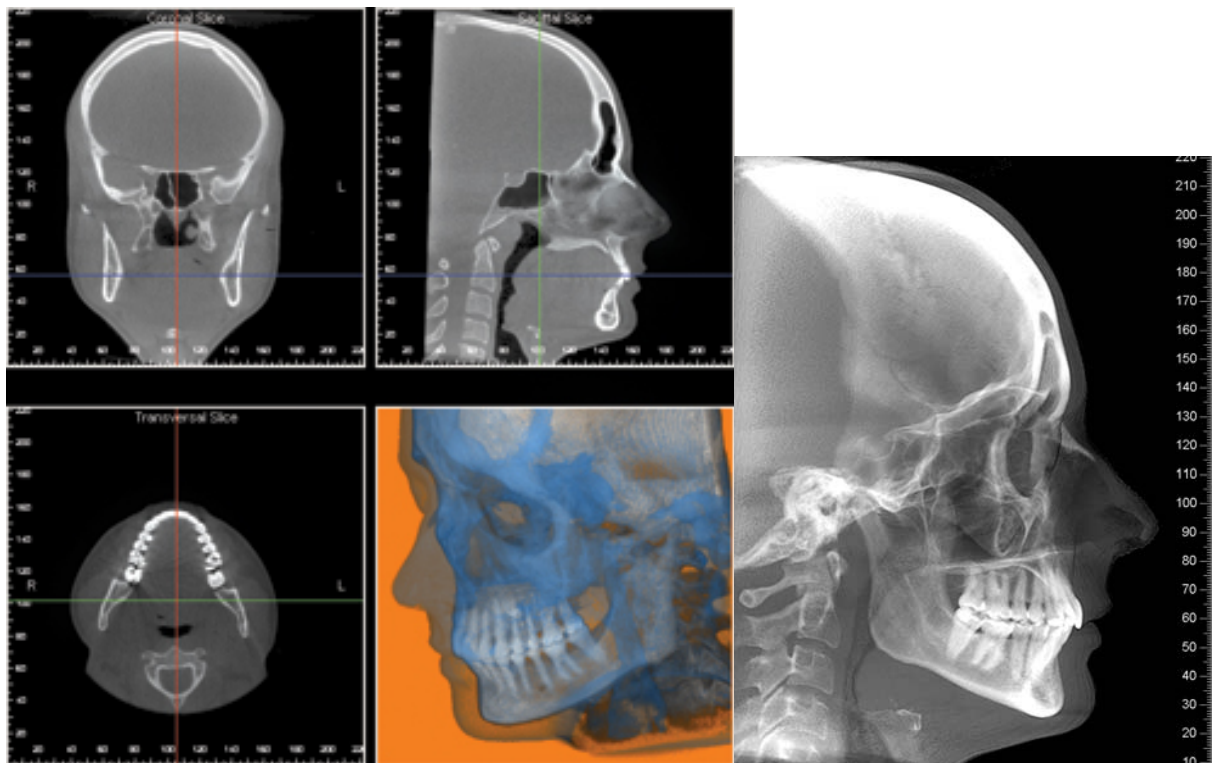
### Simple Graphic User Interface:

This will allow you to view and switch between hard and soft tissue. This will give clarification of the anatomy, especially of soft tissue structures such as the airway.



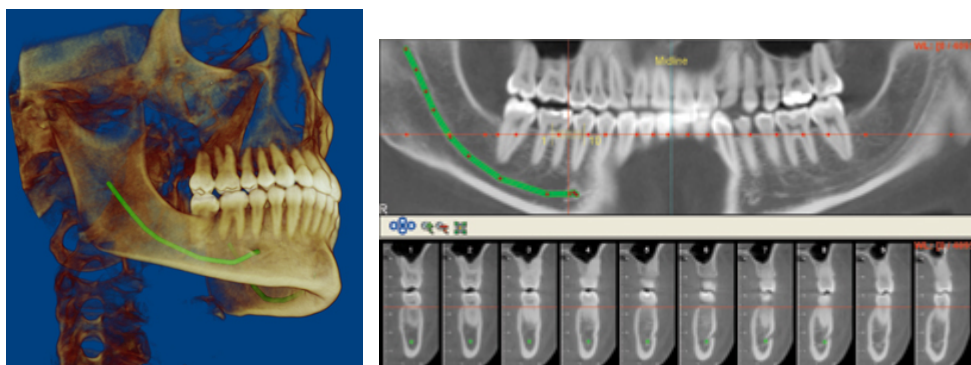
## Multiple Planar Views

This will give orthogonal projected slices, sagittal, coronal and axial planes, creating a complete cross-sectional analysis. OPG and Cephalometric images can be created from the 3D data, meaning less radiation dose to the patient.



## 3D Nerve Marking

You can identify and isolate the nerve canals on a panoramic projection within 3D rendering of the skull volume. This is extremely useful when considering implant placement.



## Analysis of Airways

You can now draw the borders around selected portions of the volumetric scan and identify the airway space within the borders, as well as the most constricted portion of the airway.

This is an excellent tool to assist in a tailored device for a particular patient.

